



DESIGN

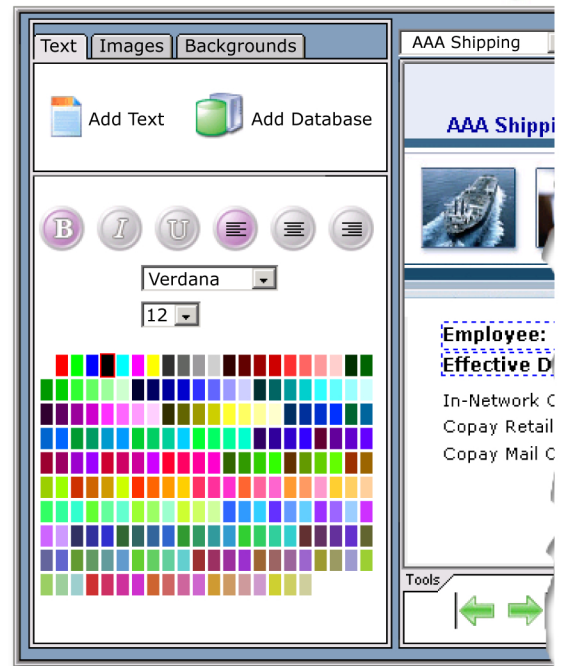
- Build and design cards online.
- Simply drag and drop text and images to place them on the card.
- Add database or text fields to your card for maximum flexibility.
- Download graphics from the web and easily insert them into the card designer.
- No limit to the amount of templates you can create.
- No limit to the amount of images you can store in your image library.
- Customize / design your envelopes, letters and more.
- Employers can make or approve template changes online.

**Mobile and Web
Apps Supported**



INTEGRATE

- No separate software required. You only need your internet browser.
- Our free automation tools make adding eligibility, groups, locations and benefits automatic.
- No website or licensing fees.
- Customer service tools your team can leverage for your customer calls.
- **Setup and training is FREE. We setup all of your templates for you prior to your first print.**



PRINT

- Groups can be setup and printed same day. No minimum order amounts.
- Full color graphics.
- View orders before they print.
- Order individuals or entire groups in seconds.
- Digital archive for all previously ordered cards and letters.